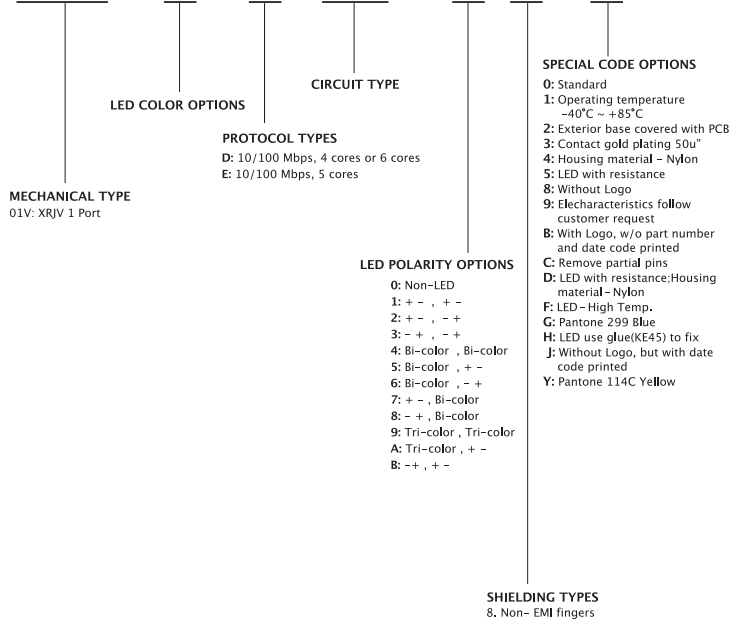
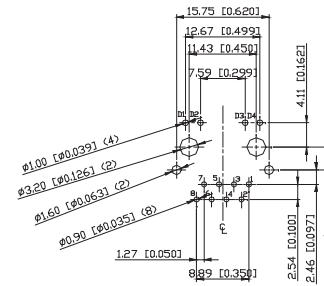
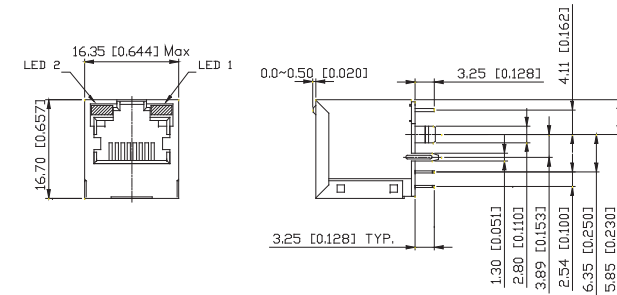


Part Numbering:

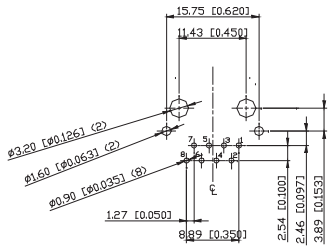
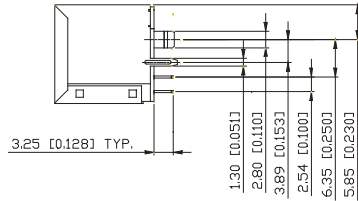
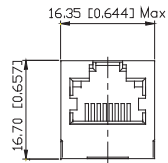
XRJV - XXX - X - X XX - X X X



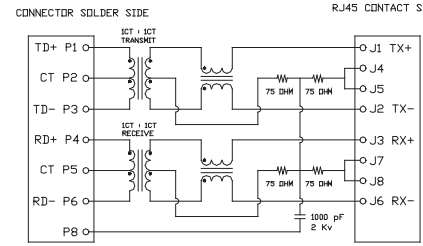
Mechanical Type: 01V



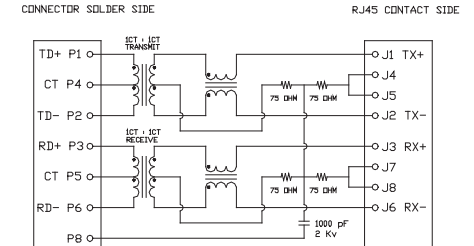
Mechanical Type: 01V



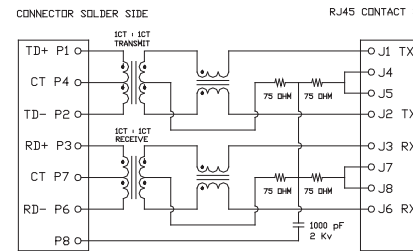
SUGGESTED PCB LAYOUT (TOP VIEW)



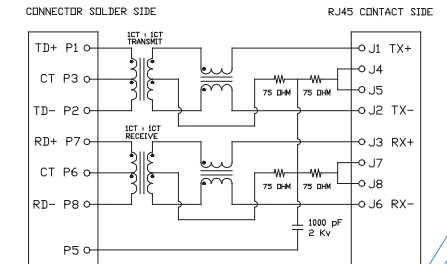
D12



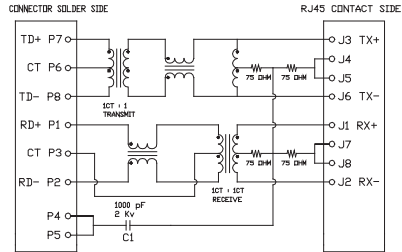
D22



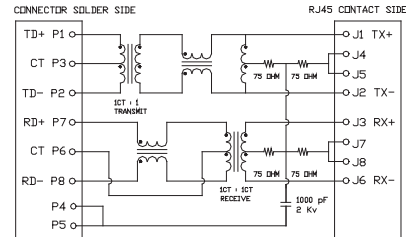
D42



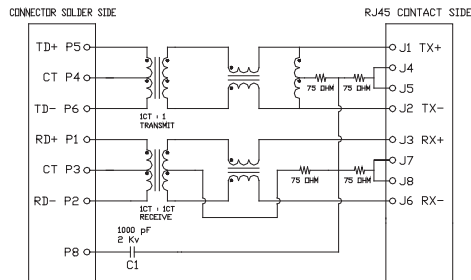
D33



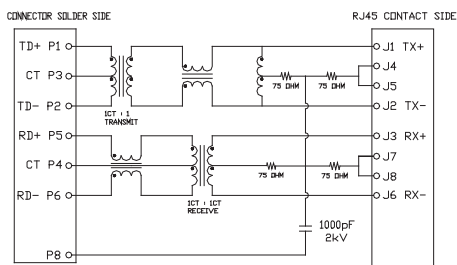
E32



E13



E41



E45



| Performance Specifications | |
|---------------------------------|---|
| Materials and Finish | |
| Housing | Thermoplastic, UL 94V-0, Color Black |
| Contacts | Phosphor Bronze, Gold Flash Plated |
| Shielding | SUS or Brass Nickel plating |
| Operating Temperature | 0C~70C |
| Storage Temperature | -40C~85C |
| Mechanical Characteristics | |
| Durability | 500 Mating Cycles |
| Mating Force | 5 Pounds Max. |
| Unmating Force | 5 Pounds Max. |
| Electrical Characteristics | |
| Current Rating | 1.5 A Max. |
| Voltage Rating | 150 VAC Max. |
| Insulation Resistance | 500 MΩ Min. |
| Dielectric Withstanding Voltage | 1000 VAC for 1 minute between adjacent contacts |
| Termination Resistance | 150mΩ Max. 160mΩ Max. |

| Features and Benefits | |
|--|--|
| Double the capacity of single RJ connector | |
| Provides different uses for connectivity | |
| Maintain compact form factor | |
| Optional LED integrated directly into jack | |
| Shielded jacks provide grounding thru panel and PC board | |