

Positions

	A	B	C	D
36	36.72	49.3	62.1	46.6
50	51.84	64.4	77.4	61.9

Material & Finish

SHELL:

Steel, SPCC T=0.4mm,
Front shell plated Nickel 80u",
Back shell plated Tin 80u".

PIN CONTACT:

Copper, Phosphor Bronze T=0.25mm,
Contact area plated Gold Flash 1u",
Solder tails plated Tin 40u".

INSULATOR:

PBT & Glass-fibre reinforced
UL-94-V0

NUMBER OF CONTACT:

36,50

CURRENT RATING:

5 Amp

DIELECTRIC STRENGTH:

1000V for one minute

INSULATOR RESISTANCE:

1000MΩ Min. (at 500V DC)

DURABILITY:

500 Cycles

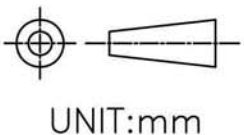
TEMPERATURE:

-55° C to +105° C

GENERAL TOLERANCE

X.	±0.30
.X	±0.25
.XX	±0.15

SIZE	DRAWN
A4	Sam
REV.	DATE
0	Mar/27/12



DESCRIPTION:

Centronics PCB straight SMT type
male connector (RoHS)

PRODUCT NO.

XDS-RCPB-xxPB1R

FILE NAME.

XMULTIPLE
Technologies, Inc.