

QUAD PORT 10/100 BASE PULSE TRANSFORMER

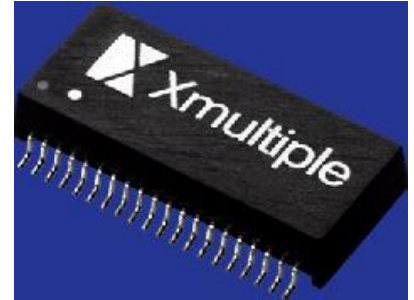
P/N: XF-LCZ3W4CA

Page :

1/3

Feature

- Molding process.
- IEEE 802.3 Ethernet compatible.
- 100 base-TX surface mountable.
- Design for multi-port repeater and Ethernet switching HUB application.
- Customer designs available for specific application.
- RoHS compliant.



Electrical Specifications @ 25°C

Part Number	Turns Ratio (±5%)		OCL(μH Min) @ 100KHz/0.1V with 8.0mA DC	Insertion Loss (dB Max)	HI-POT (Vrms)
	TX	RX		0.3-100MHz	
XF-LCZ3W4CA	1CT : 1CT	1CT : 1CT	350	-1.15	1500

Electrical Specifications @ 25°C

Part Number	Return Loss (dB Min)			Cross Talk (dB Min)		DCMR (dB Min)		
	0.3-30MHz	30-60MHz	60-80MHz	0.3-60MHz	60-100MHz	60MHz	100MHz	200MHz
XF-LCZ3W4CA	-16	-12	-10	-40	-35	-37	-28	-25

* Operating temperature range: 0°C to +70°C. Storage temperature range: -25°C to +125°C

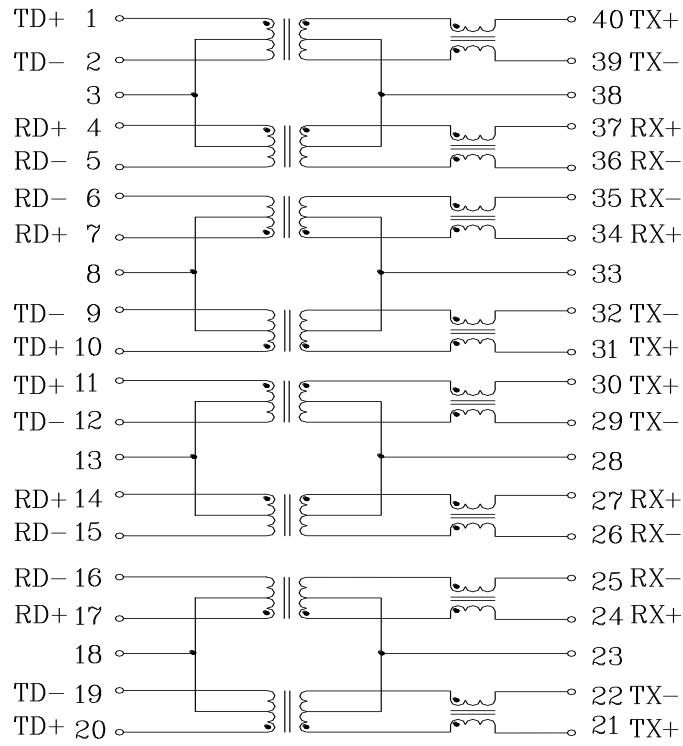
Schematic

QUAD PORT 10/100 BASE PULSE TRANSFORMER

P/N: XF-LCZ3W4CA

2/3

Page :



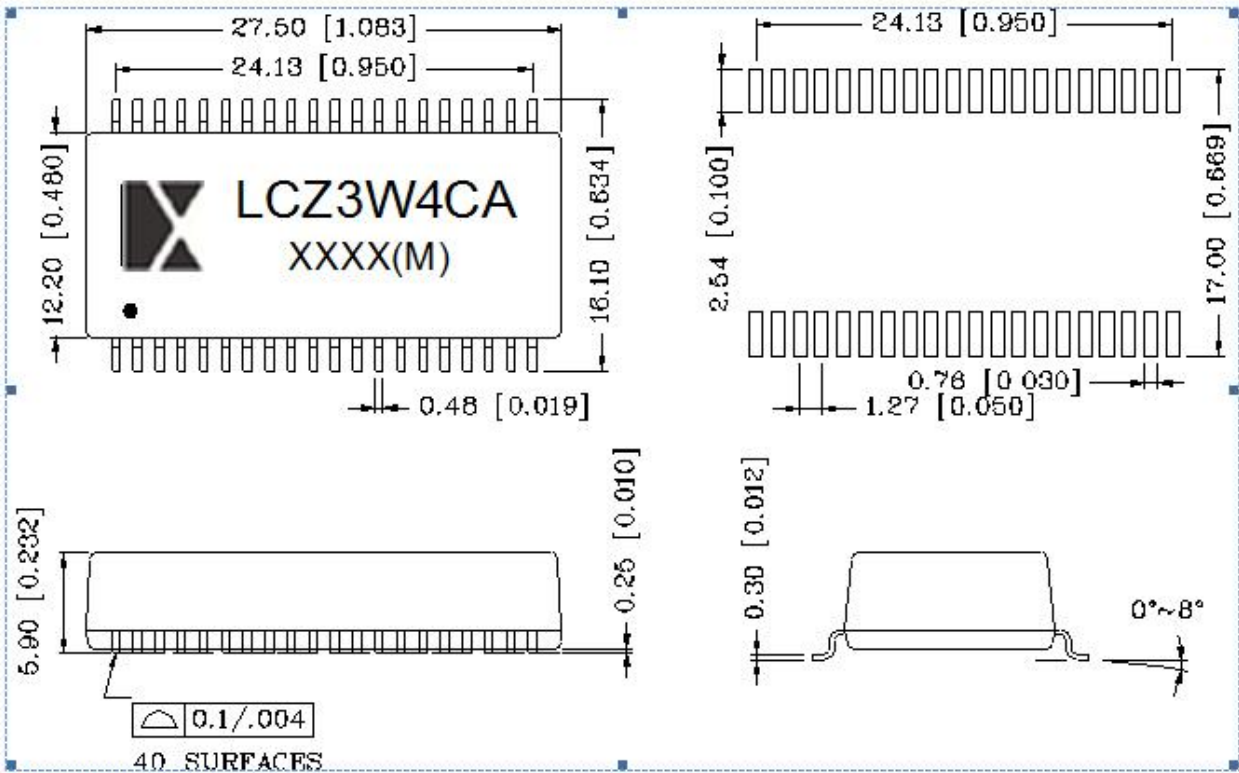
-

QUAD PORT 10/100 BASE PULSE TRANSFORMER

P/N: XF-LCZ3W4CA

3/3

Mechanical



Units: mm[Inches].

Tolerance: ±0.25 (0.010) unless specified otherwise.

Units: mm[Inches].

Tolerance: ±0.25 (0.010) unless specified otherwise.

NOTE:

Datasheet Change History:

Version	Description
V0	Datasheet Set Up