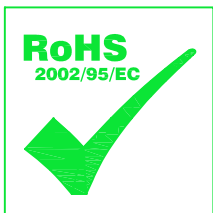
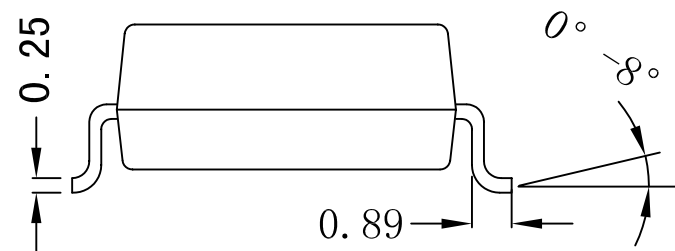
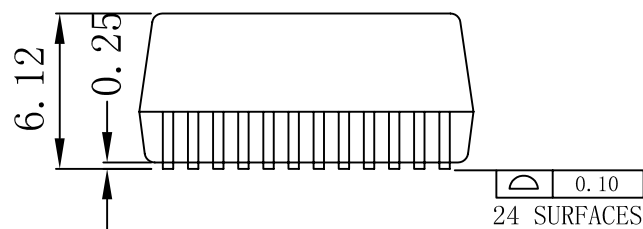
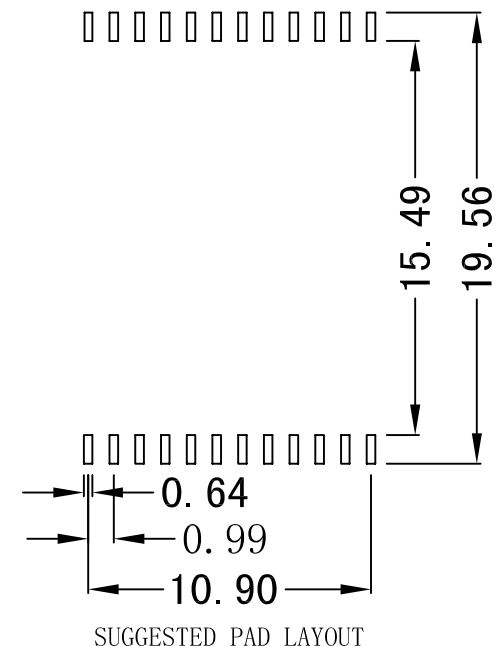
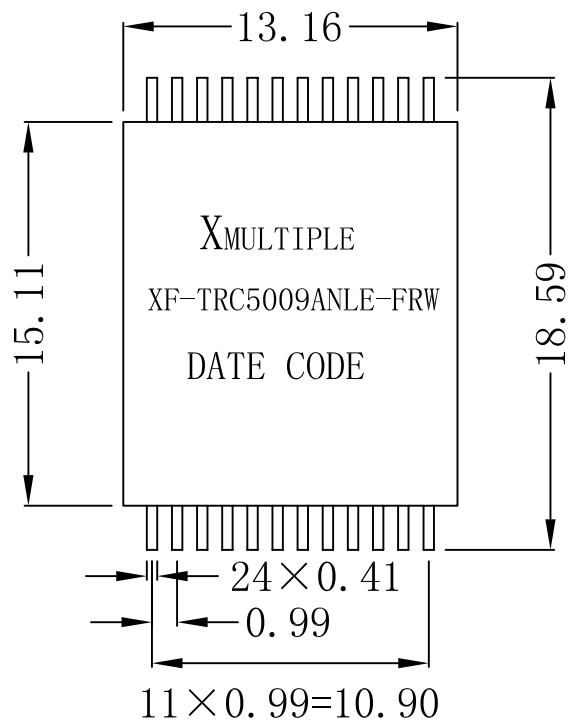


Mechanical:

| REV. | ECN NO. | DESCRIPTION | DATE | APPD |
|------|---------|-------------|------------|------|
| A | REL | | 2010/03/17 | |



NOTES:

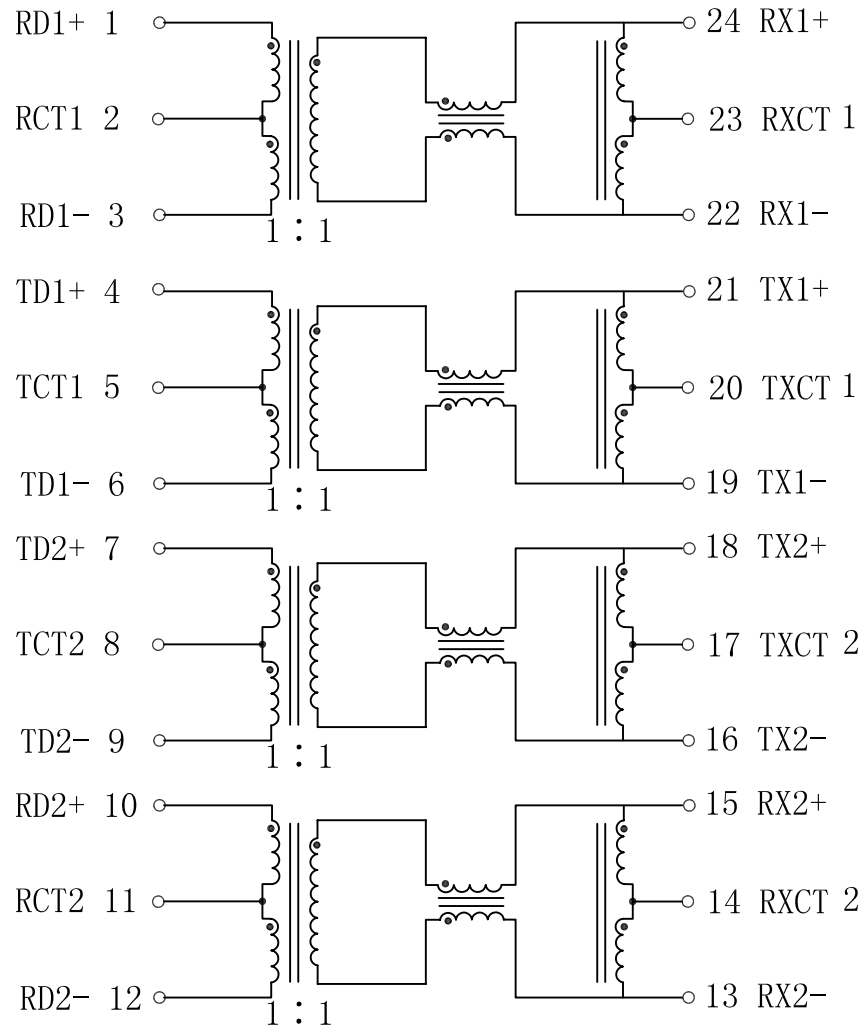
1. Designed to support application, such as SOHO (ADSL modems), LAN-on-Motherboard (LOM), hub and Switches.
2. With various Turns Ratios.
3. 350uH min OCL with 8mA bias current.
4. RoHS "NLE" peak solder rating 235°C.

| | | | |
|------------|---------------|----------------------|---|
| X:X | ± 0.20 | APPD: | XMULTIPLE |
| X:XX | ± 0.10 | CHKD: | |
| X:XXX | ± 0.05 | DR: C.H.Y | |
| ANGLES | $\pm 1^\circ$ | UNIT: mm | Title: 10/100 Base-TX VoIP Magnetic Modules & PoE |
| | | | PART NO.: XF-TRC5009ANLE-FRW |
| SCALE: 1/1 | | SHEET: 1/2 | REV: A |
| | | DWG NO.: TRC10031702 | |

Schematic:

| REV. | ECN NO. | DESCRIPTION | DATE | APPD |
|------|---------|-------------|------------|------|
| A | REL | | 2010/03/17 | |

CHIP SIDE



MEDIA SIDE

Electrical Specifications @25°C

- ISOLATION: 1500 Vrms
- INSERTION LOSS:
-1.1dB MAX @1MHz-100MHz
- RETURN LOSS:
-16dB Min @1-30MHz
-14dB Min @40MHz
-13dB Min @50MHz
-12dB Typ @60-80MHz
- Differential to Common Mode Rejection:
-43dB Min @30MHz
-37dB Min @60MHz
-33dB Min @100MHz
- Crosstalk:
-43dB Min @30MHz
-37dB Min @60MHz
-33dB Min @100MHz
- Operating Temperature: 0°C ~ 70°C



| | | | |
|--------|------------|-------------|------------------------------|
| X:X | ±0.20 | APPD: | <i>X</i> MULTIPLE |
| X:XX | ±0.10 | CHKD: | |
| X:XXX | ±0.05 | DR: C. H. Y | |
| ANGLES | ±1° | UNIT: mm | PART NO.: XF-TRC5009ANLE-FRW |
| | SCALE: 2/1 | SHEET: 2/2 | REV: A |
| | | | DWG NO.: TRC10031702 |