

REV.	SPECIFICATION	ECN NO.	APPD.
A6			

Material:

Housing: 30% Glass filled PBT UL94V-0.

Contacts: Phosphor Bronze.

Electrical Characteristics:

Current Rating: 1 AMP.

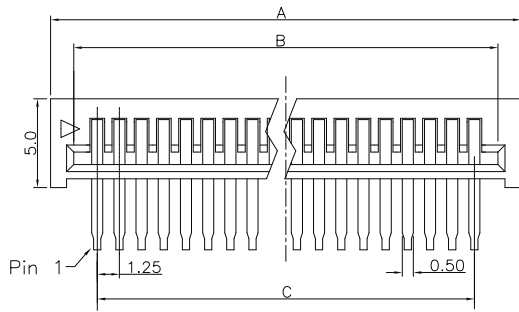
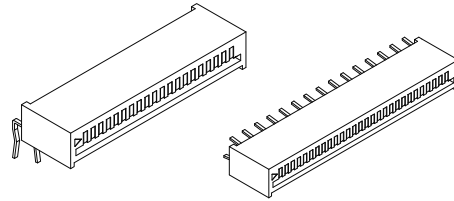
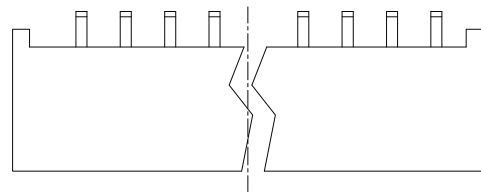
Dielectric Withstanding Voltage: AC 500V For 1 minute.

Insulator Resistance: 1000MΩmin.at DC 500V.

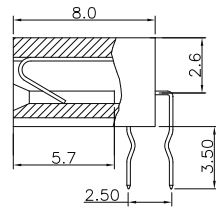
Contact Resistance: 20mΩmax.at DC 100mA.

Operating Temperature: -55°C~+105°C.

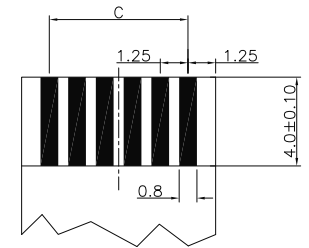
***RoHS Compliant**



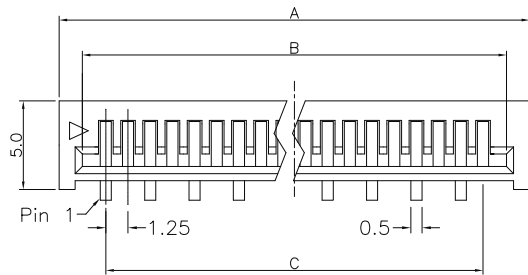
2532-xxTR



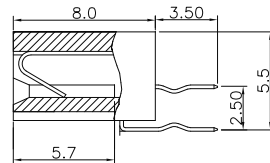
Side Entry



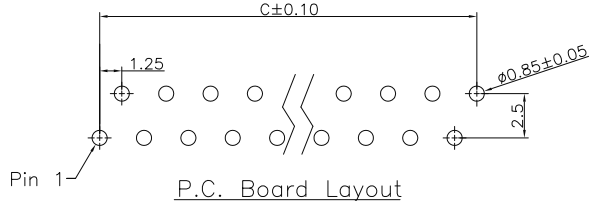
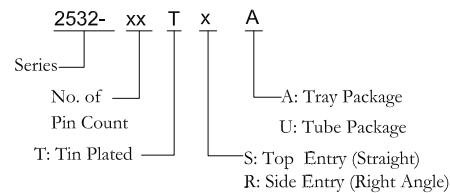
FFC/FPC Dimension
Thickness 0.3±0.05mm



2532-xxTS



Top Entry



P.C. Board Layout

Position	3 Thru 36
Dimension	
A	(No. of Positions X 1.25)+3.4
B	(No. of Positions X 1.25)+1.3
C	(No. of Positions X 1.25)-1.25

Tolerances	Drawn No.	2532D01001
x = ±0.5	Projection	
.x = ±0.25	Unit	mm
.xx = ±0.15	Scale	1:1
	Drawn By	FHY02/21'08

Title: 2532 Series
FFC/FPC Connector
1.25mm Non ZIF Type

Xmultiple			
P/N: XFL-2532-xxTxA			
SHEET	1/1	Ver. No.	A6