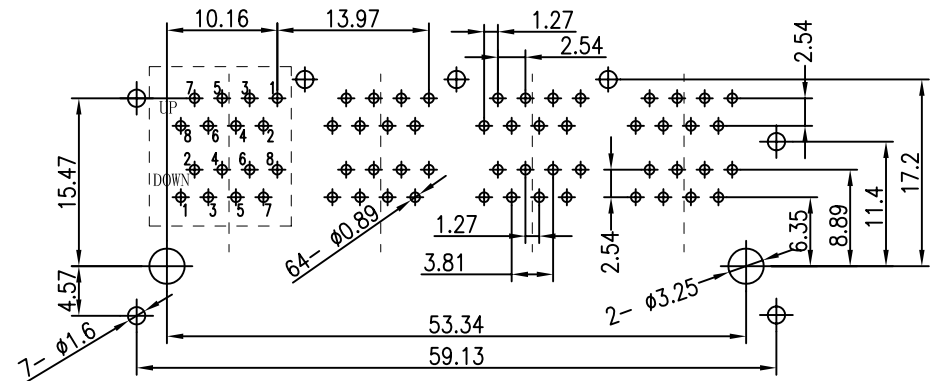
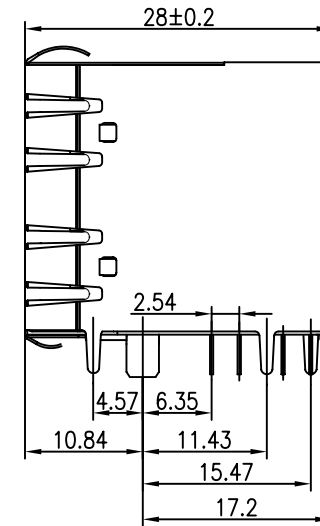
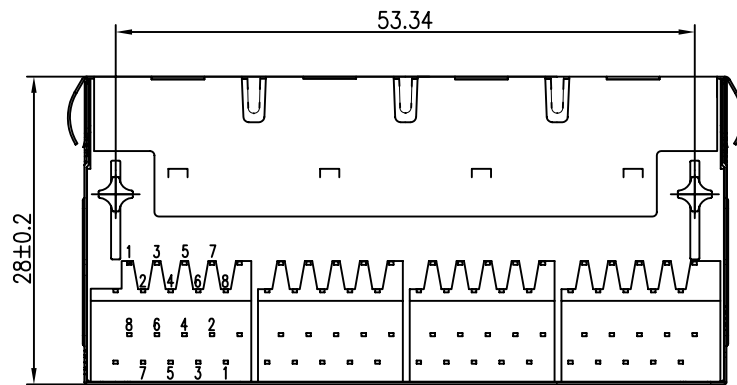
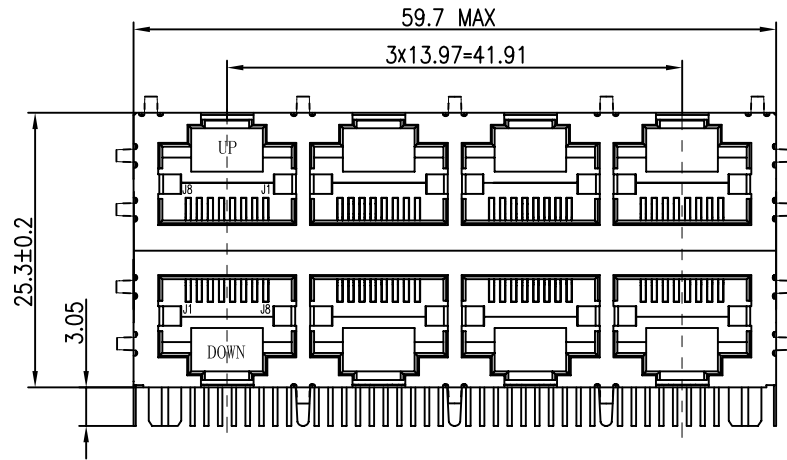


Mechanical:

REV.	ECN NO.	DESCRIPTION	DATE	APPD
A	REL		2012/04/20	



SUGGESTED PCB LAYOUT (TOP VIEW)

NOTES:

1. Designed to support application, such as SOHO (ADSL modems), LAN-on-Motherboard (LOM), hub and Switches.
2. Meets IEEE 802.3 specification
3. Connector Materials:
Housing: Thermoplastic UL94V-0
Contact/Shield: Copper alloy
Shield plating: Nickel
Contact plating: Gold 6 micro-inches min. In contact area.
4. Wave solder tip temperature: 265°C Max
Wave solder tip temperature time: 5 Sec Max

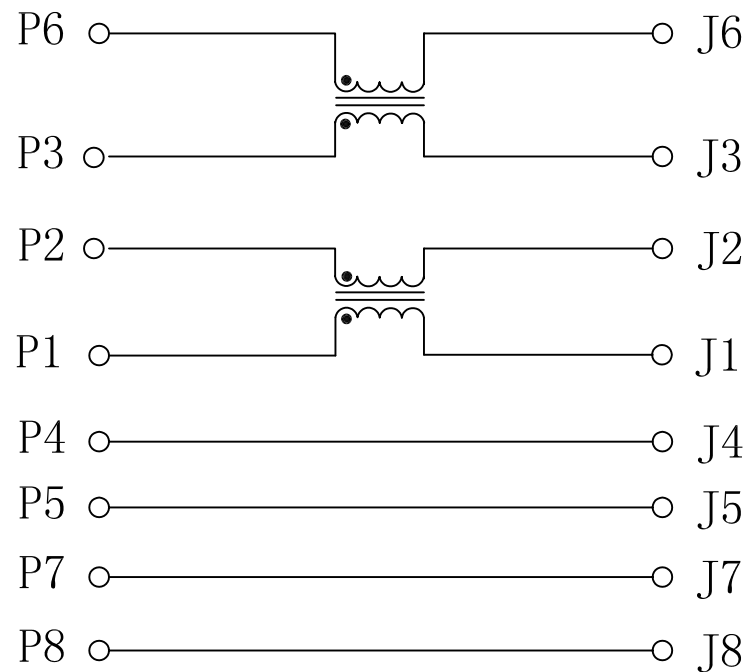


X:X	±0.20	APPD:	X MULTIPLE
X:XX	±0.10	CHKD:	
X:XXX	±0.05	DR: C. H. Y	
ANGLES	±1°	UNIT: mm	TITLE: 2×4 PORT RJ45 COMMON MODE CHOKE
		PART NO.:	XMH-TRJ47252CNL
	SCALE: 2/1	SHEET: 1/2	REV: A DWG NO.: TRC12042001

Schematic:

REV.	ECN NO.	DESCRIPTION	DATE	APPD
A	REL		2012/04/20	

PC BOARD CONNECTIONS



RJ45 CONNECTOR

ELECTRICAL SPECIFICATIONS @25°C

- Inductance OCL:
 - P6-J6: 65uH Typical @0.1V
 - P1-J1: 65uH Typical @0.1V, 10KHz
- DC Resistance:
 - 0.5 Ohms Maximum (EACH WINDING)
- Common Mode Attenuation:

@1.0MHz	8dB Typ	5Min
@5.0MHz	17dB Typ	15Min
@20MHz	23dB Typ	15Min
@70MHz	25dB Typ	20Min
@200MHz	22dB Typ	17Min
@500MHz	11dB Typ	6Min
- Isolation: 500Vrms
- Operating Temperature Range: 0°C TO 70°C



X:X	±0.20	APPD:	X MULTIPLE
X:XX	±0.10	CHKD:	
X:XXX	±0.05	DR: C. H. Y	
TITLE: 2×4 PORT RJ45 COMMON MODE CHOKE			
ANGLES	±1°	UNIT: mm	PART NO.: XMH-TRJ47252CNL
	SCALE: 2/1	SHEET: 2/2	REV: A DWG NO.: TRC12042001