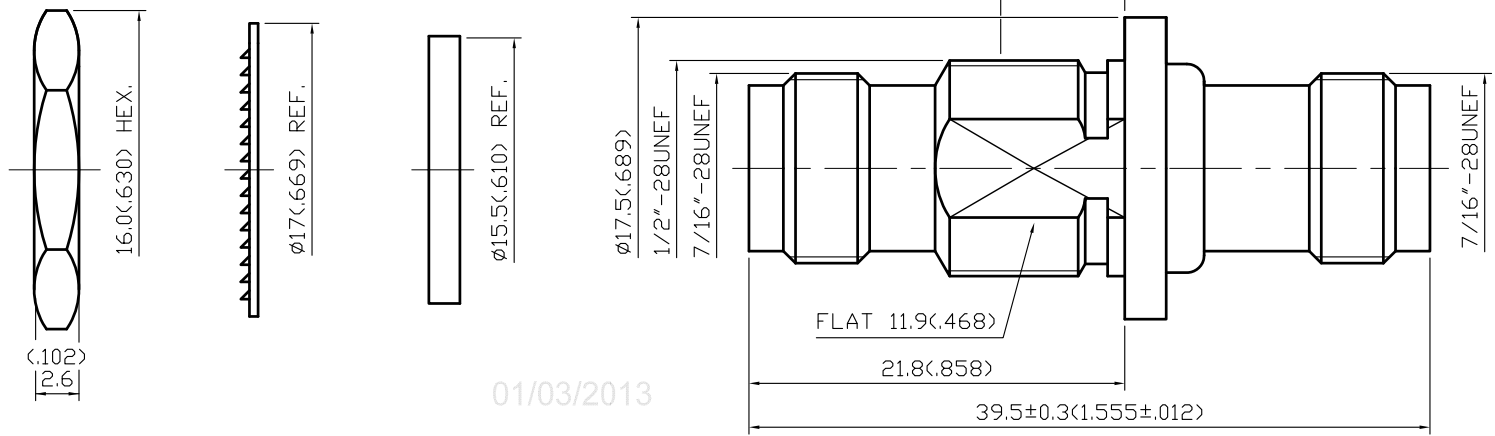
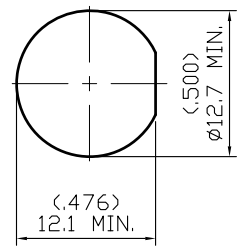


| NO | DESCRIPTION | DATE |
|----|--|-----------|
| 1 | NICKEL 100μ" MIN. → NICKEL | 06.06.12' |
| 2 | MODIFY 5.2 | 08.01.12' |
| 3 | 5.5 → 7.2 | 09.05.12' |
| 4 | DEL PROOF VOLTAGE WORKING VOLTAGE → VOLTAGE RATING | 01.02.13' |



01/03/2013



MOUNTING HOLE
SCALE 2:1

1.0 ELECTRICAL

- 1.1 FREQUENCY RANGE: DC-11 GHz
- 1.2 NOMINAL IMPEDANCE: 50 OHM
- 1.3 VOLTAGE RATING: 500 VOLTS MAX. 4
- 1.4 S11,S22: VSWR: 1.3 MAX. @6 GHz

2.0 MATERIALS

- 2.1 BODIES: BRASS PER JIS-C3604
- 2.2 CENTER CONTACT: BRASS PER JIS-C3604
- 2.3 INSULATION: TEFLON PER ASTM D1457 AND ASTM D1710

3.0 FINISHES AND OTHERS

- 3.1 SEE BELOW TABLE FOR DETAILS.

4.0 MECHANICAL

- 4.1 INTERFACE IN ACCORDANCE WITH: MIL-STD-348A

5.0 ENVIRONMENTAL

- 5.1 OPERATING TEMPERATURE RANGE: -65° C TO +165° C
- 5.2 CONNECTOR MUST WITHSTAND WATERPROOF LEAK TEST PRESSURE 7kg/cm² MIN. 2
- 5.3 STORAGE TEMPERATURE RANGE: -30° C TO +70° C
- 5.4 STORAGE HUMIDITY: 90% RH MAX.

| | | | | |
|----|---------------------|----------|------|-------------------|
| 10 | CENTER CONTACT | BRASS | 2 | GOLD 30μ" MIN. |
| 9 | CHASSIS | BRASS | 1 | NICKEL 100μ" MIN. |
| 8 | O-RING | SILICONE | 1 | RED |
| 7 | HERMETICALLY SEALED | — | 1 | NONE |
| 6 | BODY | BRASS | 1 | NICKEL 100μ" MIN. |
| 5 | INSULATION | TEFLON | 2 | NONE |
| 4 | WASHER | BRASS | 1 | NICKEL |
| 3 | GASKET | SILICONE | 1 | RED |
| 2 | WASHER | STEEL | 1 | NICKEL |
| 1 | NUT | BRASS | 1 | NICKEL |
| NO | DESCRIPTION | MATERIAL | Q'TY | FINISH |

1

APPROVED

 by _____ DATE: _____

| DESCRIPTION | | HERMETICALLY SEALED TNC STRAIGHT BULKHEAD JACK-JACK ADAPTER | | | | | | |
|---------------|-----------------|---|-----|-------------------|------------------------------|---------|----|------|
| 製圖 | DRAWN | TOLERANCE | 品名 | XRF-15-34-5 T.G.N | 日期 | DATE | 版次 | REV. |
| | <i>Kristina</i> | | | | | | | |
| 檢圖 | CHECK | 單位 | 單 | UNIT | DWG.NO. | 15-0210 | | |
| | <i>Ivan</i> | | | | | | | |
| 認定 | APPROVAL | .XXX ±0.05 | 比例 | SCALE | Xmultiple Technologies, Inc. | | | |
| <i>Angela</i> | ANGLE | ±5° | 3:1 | | | | | |