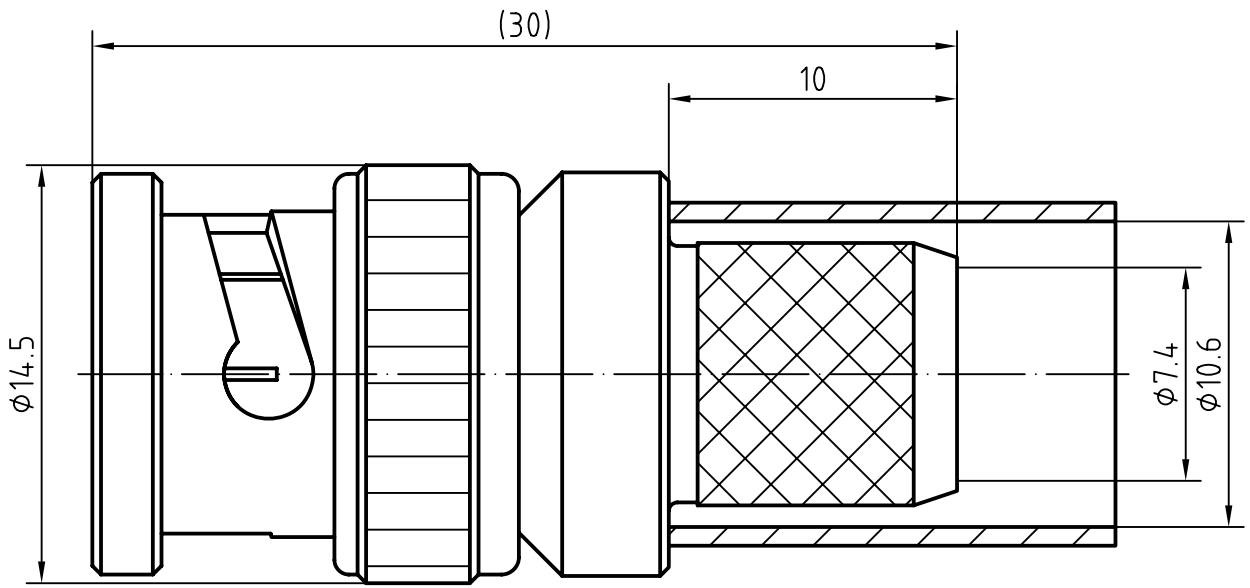
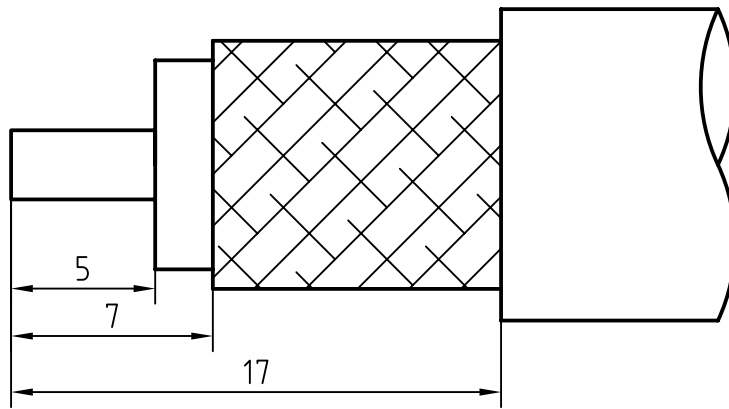


DRAWING



CABLE(RG8/U,RG213/U,SYV-50-7-1)



| 5 | 1 | O ring | Silicone rubber | |
|---------|----------|--|-----------------------------|-----------------------|
| 4 | 1 | Nut | Brass/Nickel plated | |
| 3 | 1 | Body | Brass/Nickel plated | |
| 2 | 1 | Insulator | PTFE | |
| 1 | 1 | Center contact | Phosphor bronze/Gold plated | |
| Itemref | Quantity | Title/Name, designation, material, dimension etc | | Article No./Reference |

| | | | | | |
|----------------------------|---------------------------|---------------------------------|----------------------|------------------|----------------|
| Designed by Mingang Han | Checked by Zhichao Gao | Approved by - date Hongyu Du | File name BNC-J7Y | Date 10.08.31 | Scale 5 : 1 |
|----------------------------|---------------------------|---------------------------------|----------------------|------------------|----------------|

Xmultiple

XRF-BNC-J7Y-AS1

Edition
1.0

Sheet
1/1

CHARACTERISTICS

DESCRIPTION: BNC Type male connector

Electrical data:

| | |
|--|--|
| Impedance: | 50 ohm |
| Frequency range: | DC to 4 GHz |
| Return loss: | ≥30dB, DC-1GHz ≥25dB, 1-2GHz ≥18dB, 2-4GHz |
| Insertion loss: | ≤0.05 X \sqrt{f} [GHz] dB |
| Insulation resistance: | ≥5000MΩ |
| Test voltage: | 1500 V rms |
| Working voltage: | 400 V rms |
| Contact resistance: | |
| 1). Centre contact: | 1.5 mΩ |
| 2). Outer conductor: | 1.0 mΩ |
| Power handling (at 20 °C, sea level, VSWR 1.0): | 80 W @ 2 GHz |
| <i>- Limitations are possible due to the used cable type -</i> | |

Environmental data:

| | |
|---------------------|------------------|
| Temperature rating: | -55 °C to 155 °C |
| 52/95/EC (RoHS): | Compliant |

Mechanical data:

| | |
|-----------------------------|---------------|
| Mating cycles: | ≥500 |
| Center contact captivation: | ≥ 15 N(axial) |

Suitable cables:

RG8/U, RG213/U, SYV-50-7-1

Xmultiple