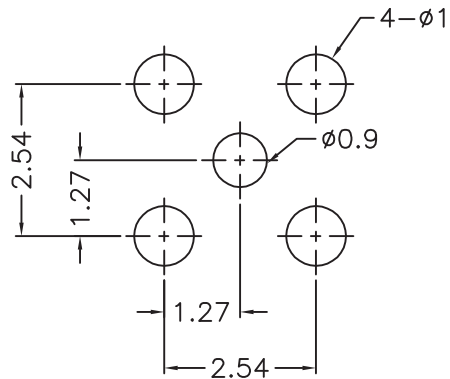
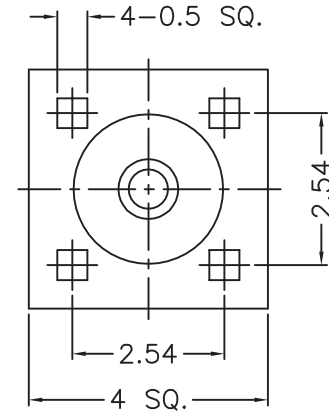
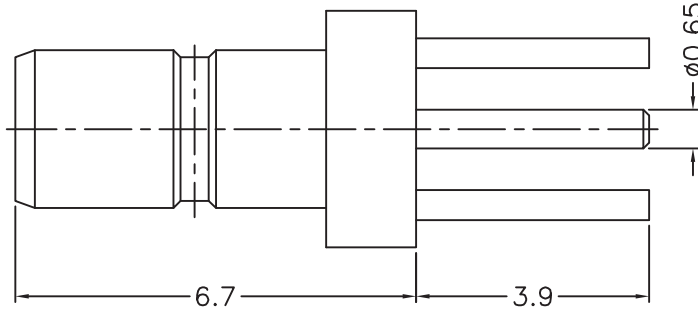


1 2 3 4 5 6 7 8

REVISIONS		
ISS	ZONE	DESCRIPTION\PER REQUEST\DATE



PCB MOUNTING HOLE
(印刷电路板架設孔)



NOTES: FINISH (PLATING THICKNESS IN MICRO-INCHES)

1. BRASS
2. THIN GOLD OVER NICKEL PL. 50 MIN. THICK OVER COPPER PL. 50 MIN. THICK
3. GOLD PL. 3 MIN. THICK OVER NICKEL PL. 50 MIN. THICK OVER COPPER PL. 50 MIN. THICK
4. TEFLON

RoHS COMPLIANT

DIMENSIONS ARE IN MILLIMETERS				PART NO.		Xmultiple Technologies Inc.	
UNLESS OTHERWISE SPECIFIED TOLERANCES				XRF-SSMB-S1251Q1-50			
0.5-6 = ±0.2				APPROVED	DATE		
6-30 = ±0.4					11-18-'14		
30-120 = ±0.6				CHECKED	DATE	TITLE	
120-315 = ±1					11-18-'14	SSMB P.C. Mount Jack Connector	
315-1000 = ±1.6				DRAWN	DATE	DRAWING NO.	
1000-2000 = ±2.4				ANGELA	11-18-'14	500S-1251Q1-50	
				SCALE	8/1	ISSUE	A
						FILE NO.	R:\D\G\DWG\500S\1251Q1\50

NO.	DESCRIPTION	MATERIAL	FINISH	Q'TY	DRAWING NO.
3	CONTACT PIN	NOTE 1	NOTE 3	1	500S-1251Q1-3
2	INSULATOR	NOTE 4	NATURAL	1	500S-1251Q1-2-50T
1	BODY	NOTE 1	NOTE 2	1	500S-1251Q1-1

1 2 3 4 5 6 7 8

F

F

E

E

D

D

C

C

B

B

A

A