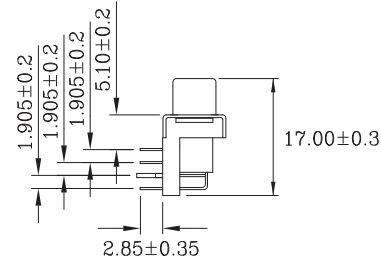
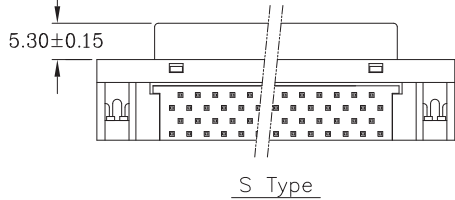
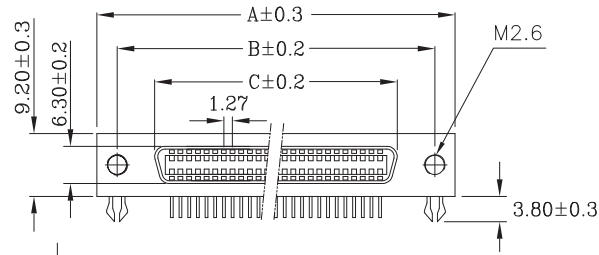
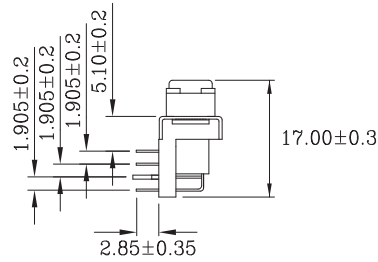
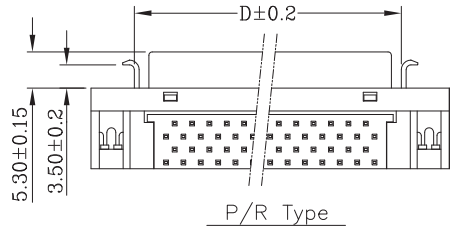
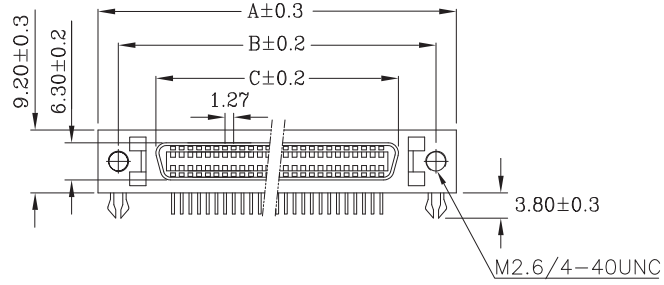


REV.	SPECIFICATION	ECN NO.	APPD.
A3			



Material:

Housing: Thermoplastic Polyester Glass Filled UL94V-0.

Contacts: Copper Alloy, Gold Selective Plated.

Shell: Metal, Nickel Plated.

Electrical Characteristics:

Current Rating: 1 AMP.

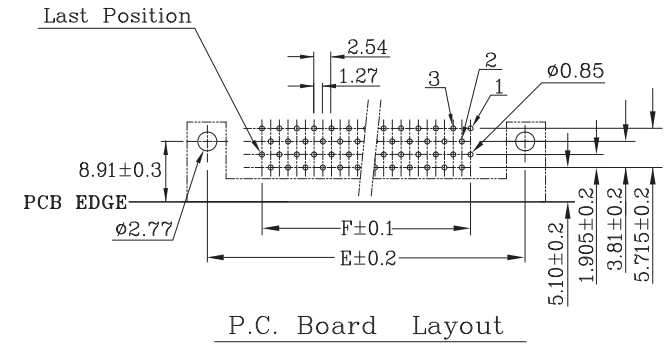
Dielectric Withstanding Voltage: AC 500V.

Insulator Resistance: 500MΩ min.

Contact Resistance: 35mΩ max.

Operating Temperature: -55°C~+105°C.

***RoHS Compliant**



7226-A xx F x C00 A /57

Series _____
Position _____
F: Female _____

_____ Ribbon
_____ A: Tray Package
_____ C: Selective Gold Plated
_____ P: M2.6 With Latch
_____ R: 4-40UNC With Latch
_____ S: M2.6 W/O Latch

Position	Dimension					
	A	B	C	D	E	F
14	29.57	23.64	12.63	17.08	23.64	7.62
20	33.40	27.40	16.44	20.83	27.45	11.43
26	37.19	31.26	20.25	24.64	31.26	15.24
36	43.54	37.61	26.60	31.05	37.61	21.59
40	46.15	40.15	29.14	33.70	40.15	24.13
50	52.50	46.50	35.49	39.88	46.50	30.48
68	63.92	57.92	46.92	51.32	57.90	41.91
100	84.18	78.23	67.10	71.64	78.30	62.23

Tolerances	Drawn No.	7226D02001
x = ±0.5	Projection	
.x = ±0.25	Unit	mm
.xx = ±0.15	Scale	1:1
	Drawn By	Sunny 05/09'11

Title: 7226 Series
1.27mm Female Ribbon Type
Right Angle

700

Xmultiple			
P/N: XSCS-7226-A50FPC007/57			
SHEET	1/1	Ver.No.	A5