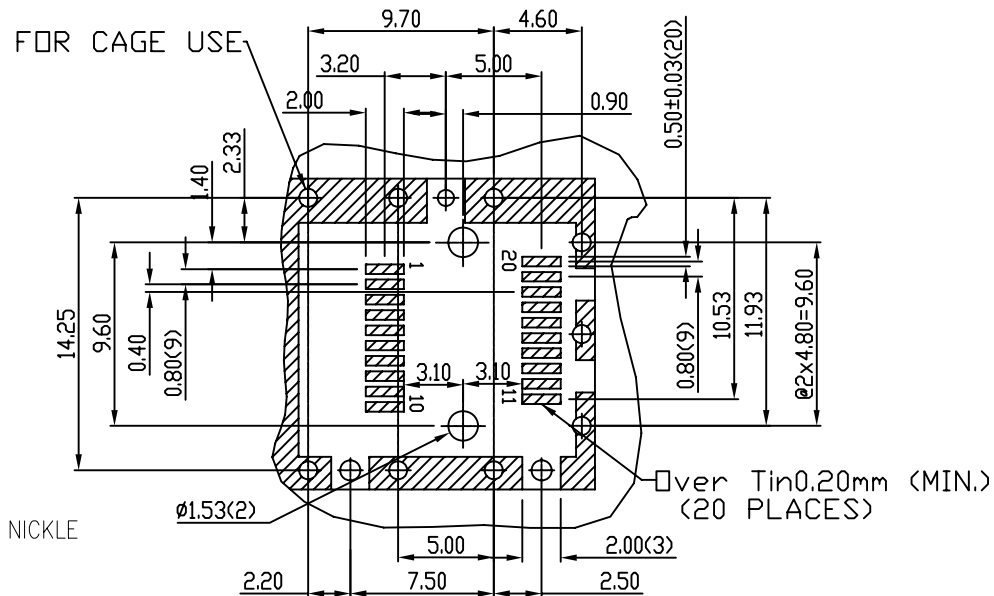
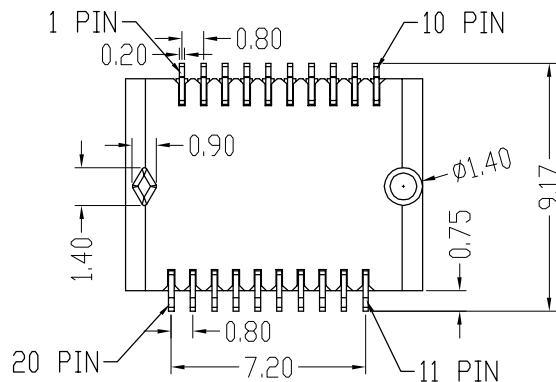
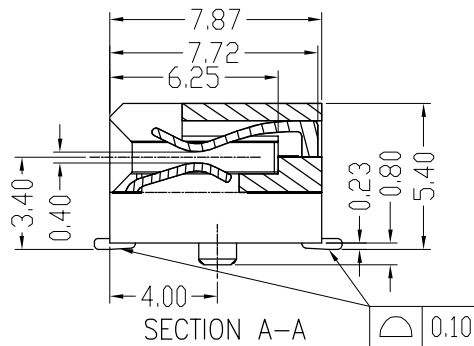
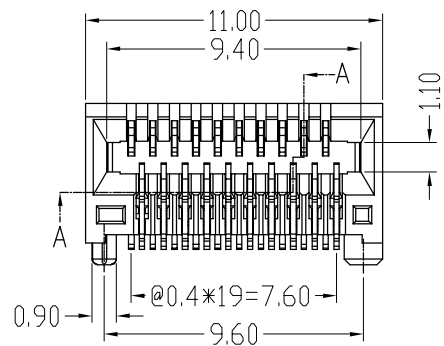


REVISION RECORD				
REV	ECO	DESCRIPTION	DRFT	CHKD



NOTE:

MECHANICAL:

- CONTACT: COPPER ALLOY T=0.20mm.
- HOUSING: LCP UL 94V-0. COLOR: BLACK.
- CAGE: COPPER ALLOY T=0.25mm.

PLATED:

- CONTACT AREA : PLATING GOLD OVER NICKLE AND 100u"MIN TIN OVER NICKLE

MECHANICAL REQUIREMENT:

- DURABILITY: 100 CYCLES MIN.
- INSERTION AND EXTRACTION FORCE: 40N MAX & 11.5N MAX

ENVIRONMENTAL:

- CONTACT RESISTANCE: 20 MILLIOHMS MAX INITIAL.
- DIELECTRIC WITHSTANDING VOLTAGE: 300V AC/MIN.
- OPERATION TEMPERATURE: -55°C~+105°C.
- STORAGE TEMPERATURE: -55°C~+105°C.
- WAVE SOLDERING TEMPERATURE: 255~265°C(5~10SECOND).
- ROHS COMPLIANT

PART NUMBER: XSFP-CONN-04X

04-SERIAL NUMBER      GOLD PLATING: 1-3u" 2-6u"  
3-15u" 4-30u"  
5-50u"

DETACHED LISTS	MM (INCH)	DFTD JACK	DATE 06/22/2011	Xmultiple Technologies, Inc.	
	TOLERANCES EXCEPT AS NOTED	CHKD	DATE		
		MFD	DATE		
		APPLV JOHN	DATE 06/22/2011		
	MM			TITLE	
	.0 ± 0.20	±			SFP CONNECTOR
	.00 ± 0.15	±			
	.000 ± 0.075	±			
	ANGLES ±	QT'Y :		DRAWING NO. SFP-004	SIZE A3
	THIRD ANGLE PROJECTION	FINISH:		/PART NO. SEE NOTE	REV
		SCALE :		DO NOT SCALE DRAWING	SHEET 1 OF 1