

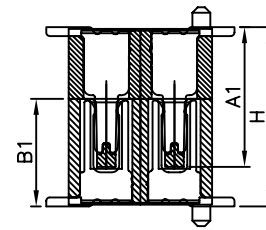
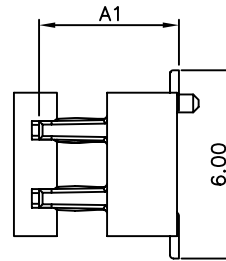
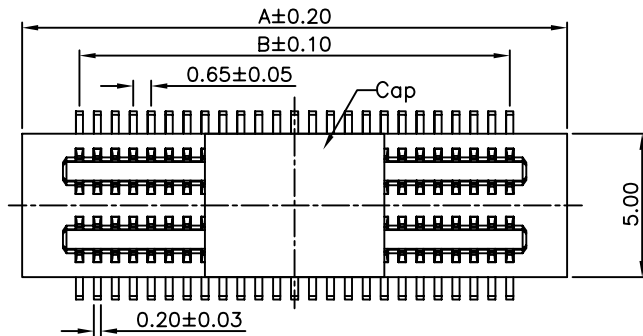
1

2

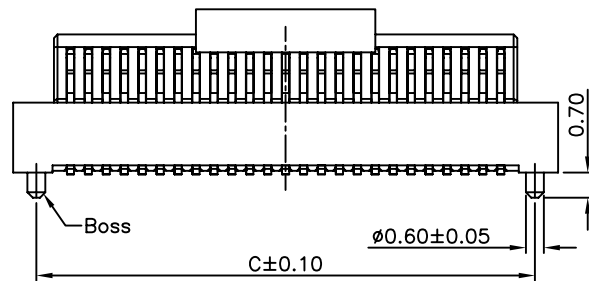
3

4

5



Mating Drawing (Ref)



Mating Dimension

P/N(Plug)	P/N(Socket)	Plug Height Dim A1	Mating Height Dim B1	Mating Height Dim H
2065P-XXG-320-020	2065S-XXG-XXX-020	3.2	XX	XX
2065P-XXG-420-020	2065S-XXG-XXX-020	4.2	XX	XX

## Specifications :

1. Current Rating : 0.5A AC/DC
2. Voltage Rating : 50V AC/DC
3. Contact Resistance : 30m ohm. max.
4. Insulation Resistance : 100M ohm. min.at 100V DC
5. Withstanding Voltage : 100V AC for one minute
6. Operating Temperature Range : -20°C to +105°C

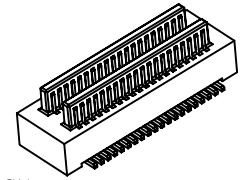
## Material and Plated:

- 1.Housing :High Temp. Plastic (UL94V-0)  
Color :White
  - 2.Contact : Phosphor Bronze
  - 3.Plated : Gold Plated
- Package:800Pcs/Reel

## How To Order

2065P-XXG-XXX-020

- 020 Type Height
- G: Gold Plated
- No. Of Positions
- P: Plug

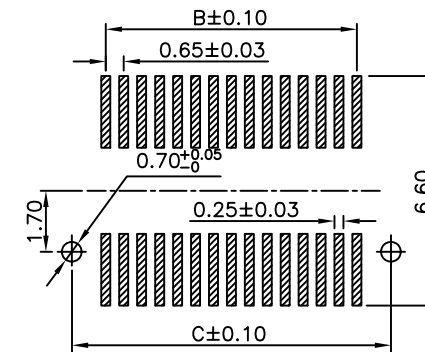


## \*\*Contact Dimension (With Boss)

Contact	DIM. A	DIM. B	DIM. C
20	9.85	5.85	8.65
30	13.10	9.10	11.90
40	16.35	12.35	15.15
50	19.60	15.60	18.40

## \*\*Contact Dimension (Without Boss)

Contact	DIM. A	DIM. B
20	9.85	5.85
30	13.10	9.10
40	16.35	12.35
50	19.60	15.60



PCB LAYOUT

RoHS Compliant

DRAWN:  
Jeremy LiuCHECKED:  
Jerry ChenAPPROVAL:  
Mike Wu

## GENERAL TOLERANCE:

.X=±0.2  
.XX=±0.15

UNIT: MM

SCALE:1:1

SHEET: 1 / 1

PROJECTION:

DESCRIPTION: 0.65mm Board To Board Plug  
XXmm Height

PART NO:

2065P-XXG-XXX-020

SIZE

**A4**

REV	DATE	FILE	BY
A	29-Jul-2011	(PC0001)	Jeremy Liu