

RECOMMENDED P.C.B LAYOUT(TOP VIEW)
TOLERANCES: $\pm 0.05\text{mm}$

△ SPECIFICATION
MATERIAL
Insulator: Thermal Plastic UL94V-0
Contacts: Copper Alloy
Shell: Steel
Rivet, Boardlock: Copper Alloy
CONTACT PLATING
Underplate: 50u" Nickel
Contact Area: Gold
△△ Solder Tails Area: 100u" Tin/Lead Free

ELECTRICAL
Operation Voltage: 250 VAC Max.
Current Rating: 1 Amps Max.
Contact Resistance: 20 mohms Max.
Insulation resistance: 1000 Mohms Min @ 500 VDC
Dielectric Withstanding Voltage: 1000 VAC / Minute
Temperature Range: -55°C To +125°C

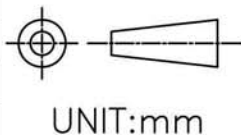
NOTE:

NO.	A	B	C
64	90.00	95	85
32	50.00	54	44

GENERAL TOLERANCE

.X ± 0.25
.XX ± 0.13

SIZE	DRAWN
A4	Sam
REV.	DATE
0	July/28/11



DESCRIPTION:

DIN 41612 B type dual rows connector
female type w/o boardlock (RoHS)

PRODUCT NO.

XTB-DNB-xxSS1x1SRSE1

FILE NAME:

XMULTIPLE
Technologies, Inc.