

■ SPECIFICATIONS

- Current Rating : 1 A AC/DC
- Withstanding Voltage : 500V AC/minute
- Insulation Resistance : 100MΩ min
- Temperature Range : - 25°C to + 85°C
- Contact Resistance : 20mΩ max

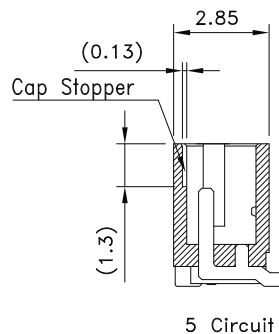
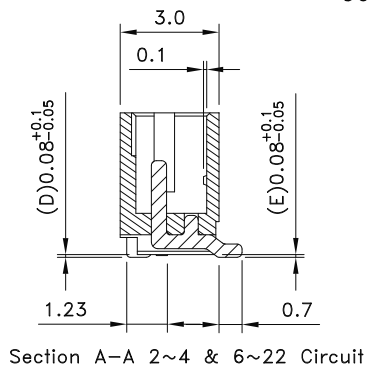
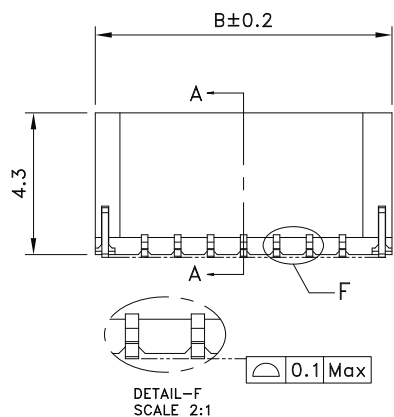
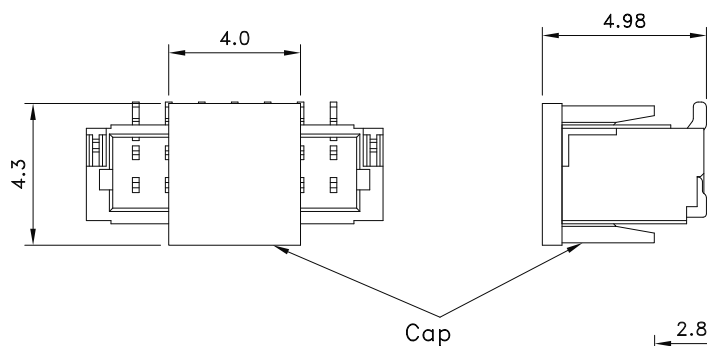
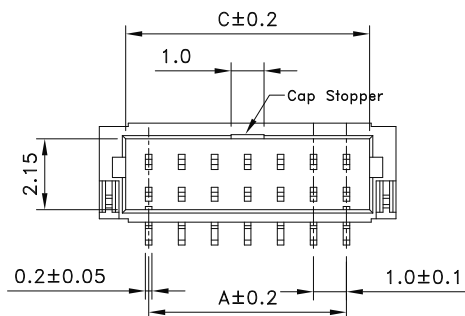
■ WAFER (SMT Type) \triangle

- Part No. : JS-1254-XX (XX)-XX-XX

Blank : Tin Plated
 G : Gold Plated
 NM : Mat-TinPlated

Blank : Nylon PA-9T UL94V-0
 NH : HTN UL94V-0 (Halogen Free)
 Blank : Nature
 BK : Color : Black

- Poles : 2 - 22(Straight)
- Material : Contact : Phos. Bronze or Brass ,
 Fitting Nail : Brass , Tin Plated
- Q' ty : 1,000 pcs./Tube
- Q' ty : 1,000 pcs./Reel /With Cap
- Note : Cap Stopper for Fixed Position



Poles	Dimensions (mm)			Poles	Dimensions (mm)		
	A	B	C		A	B	C
2	1.00	4.00	2.45	13	12.00	15.00	13.45
3	2.00	5.00	3.45	14	13.00	16.00	14.45
4	3.00	6.00	4.45	15	14.00	17.00	15.45
5	4.00	7.00	5.45	16	15.00	18.00	16.45
6	5.00	8.00	6.45	17	16.00	19.00	17.45
7	6.00	9.00	7.45	18	17.00	20.00	18.45
8	7.00	10.00	8.45	19	18.00	21.00	19.45
9	8.00	11.00	9.45	20	19.00	22.00	20.45
10	9.00	12.00	10.45	21	20.00	23.00	21.45
11	10.00	13.00	11.45	22	21.00	24.00	22.45
12	11.00	14.00	12.45				

Xmultiple

PART NO XTB-JS-1254-XX-DY1

1.00mm Crimp Style connectors Wafer <SMT>

APPROVED BY	SCALE	UNIT	TOLERANCE	LTR	REVISION RECORD	NAME	DATE	LTR	REVISION RECORD	NAME	DATE
張育瑞		mm	.0 ±0.30	\triangle	增加無鹵選項, 併圖	金飛	2010.11.01				
CHECKED BY	PROJ	VER NO.	.00 ±0.20								
黃科源		A9	.000 ±0.10								
DRAWN BY	DATE	SIZE	ANGLE								
金飛	2010.11.01	A4	0° ±1°								
			.0° ±								
			SHEET 1/1								

CUSTOMER

Conforms to The RoHS Instruction