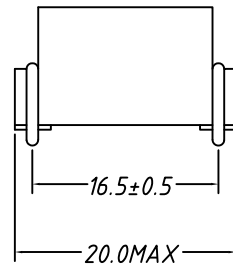
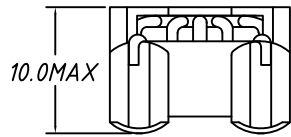
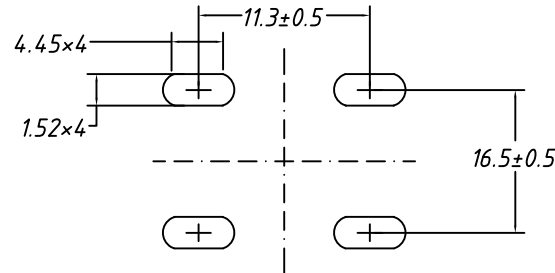
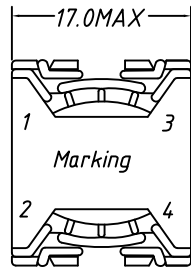
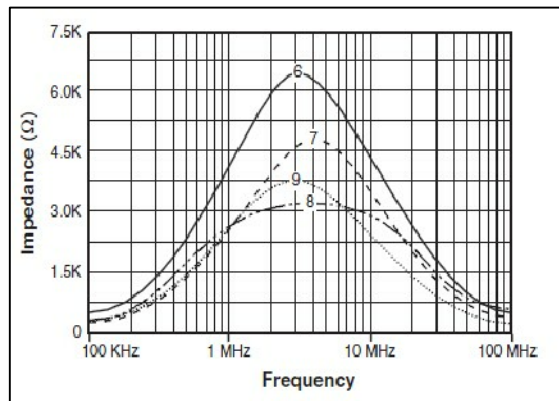


Mechanical Dimensions : (UNIT:mm)

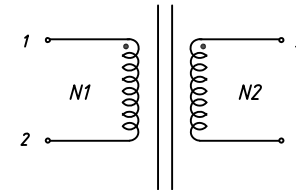


Impedance Curves



Note : Temp 20°C 48% RH. RoHS compliant.

Coil structure and schematic



• Polarity

Electrical Specifications:

Inductance : $L_{1-2/3-4} = 0.77 \text{ mH} \pm 35\%$ @1KHz 0.3V

D.C.Resistance : $R_{1-2/3-4} = 40 \text{ m}\Omega \text{ MAX.}$

Turns Ratio: at 10khz 0.1v.

$(1-2):(3-4) = 1:1 \pm 2\%$

Insulation resistance: DC 500V / 100M Ω .

MATERIAL LIST:

Base: T375J.

Core: ferrite bead

Wire: UEW-F/155°C.

Operating Temperature range: -40°C to +125°C.

	Model: Transformer		Customer P/N: P0422NL
	Xmultiple P/N: XWP-STRF-02-771Y		DOCUMENT NO. /Rev.: 120908002/00
Unless Otherwise Specified TOLERANCES: .X : ±0.50 .XX : ±0.25 Dimensions in mm	DWN .	Yang Yi	DATE: Sep./08/2012
	CHK .	Toby Du	
	APP .	Louis Lin	

PROPRIETARY

Document is the property of Xmultiple Inc & is not allow to be duplicated without authorization